

# DHI-ASI2212J-D

## Dahua Single Door Password, ID Card, Fingerprint Access Standalone



- 2.4" TFT display screen with a resolution of 240 × 320.
- Audio prompts.
- Supports 5,000 users, 5,000 cards, 5,000 passwords, 3,000 finger prints, and 100,000 records.
- The security module expansion is supported to enhance security and protect against the device being opened during a power failure.
- Card/remote/password unlock and unlock through their combinations.
- Supports duress alarm, tamper alarm, intrusion alarm, door contact timeout alarm, illegal card exceeding threshold alarm, illegal password exceeding threshold alarm, external alarm and anti-passback alarm.
- Supports guest users, patrol users, blocklist users, VIP users, general users, and others.
- TCP/IP communication; auto registration, P2P registration, and DHCP.
- Supports online update and USB update.

### Technical Specification

#### System

Main Processor	Embedded Processor
Button Type	Mechanical
Network Protocol	UDP; TCP; IPv4; P2P
OSDP Protocol	Yes
Interoperability	ONVIF; CGI
SDK and API	Yes

#### Basic

Product Type	Standalone
Display Screen	2.4" LCD
Screen Type	LCD
Screen Resolution	240 (H) × 320 (V)
Voice Prompt	Yes
Backlight	Yes
Casing Material	PC+ABS

#### Function

Verification Method	Configuration of card, remote, password, fingerprint combination unlock and multi-user combination unlock
Unlock Mode	Card, remote, password, fingerprint unlock, unlock through their combinations and multi-user combination unlock.
Card Type	ID cards
Period List	128 periods
Holiday Period	128 periods

Network Update	Yes
First User Unlock	Yes
Remote Verification	Yes
Restricted List/Trusted List	Yes
Advertisement Playing	Supports advertisement in pictures
Peripheral Card Reader	1 × RS-485 card reader 1 × Wiegand card reader
Multi-user Authentication	Yes
Multi-factor Authentication	Yes
Web Configuration	Yes
Auto Registration	Yes

#### Performance

Card Reading Distance	0 cm–6 cm (0"–2.36")
Fingerprint Sensor Type	Optical
Fingerprint Verification Mode	1:N
Fingerprint Comparison Time	1 s

#### User

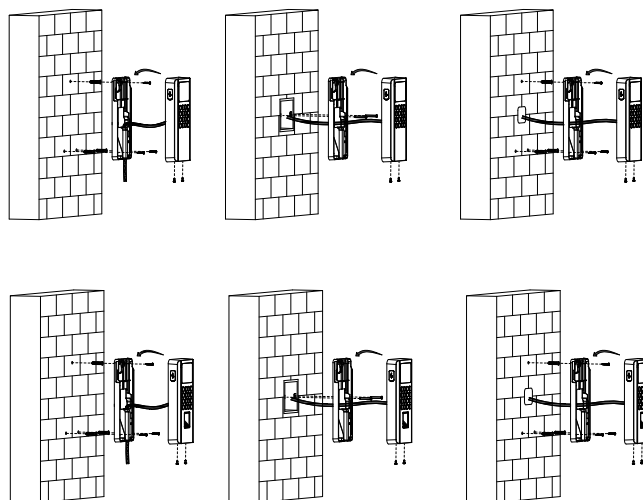
User (Card) Type	Normal user; VIP users; patrol users; guest user; blocklist user; other user
------------------	--

#### Capacity

User Capacity	30,000
Fingerprint Capacity	5,000
Card Capacity	30,000

Password Capacity	30,000
Record Capacity	100,000
<b>Port</b>	
RS-485	1
Wiegand	1
USB	1 × USB 2.0
Network Port	1 × RJ-45 100 Mbps self-adaptive Ethernet port
Alarm Input	2
Alarm Output	2
Alarm Linkage	Yes
Doorbell	1
Exit Button	1
Door Status Detection	1
Lock Control	1
<b>Alarm</b>	
Anti-pass Back	Yes
Tamper Alarm	Yes
Duress Alarm	Yes
Door Sensor Timeout	Yes
Intrusion	Yes
Illegal Card Exceeding Threshold	Yes
Duress Fingerprint	Yes
<b>General</b>	
Power Adapter	Optional
Power Supply	Standard PoE 12 VDC (the device can provide power to the lock)
Power Consumption	≤12 W
Product Dimensions	205 mm × 86 mm × 30 mm (8.07" × 3.38" × 1.18") (H × W × W)
Packaging Dimensions	254 mm × 131 mm × 75 mm (10.00" × 5.16" × 2.95") (H × W × W)
Operating Temperature	-10 °C to +55 °C (+14 °F to +131 °F)
Operating Humidity	0%–95% (RH), non-condensing
Operating Altitude	0 m–3,000 m (0 ft–9842.52 ft)
Operating Environment	Indoor
Gross Weight	0.45 kg (0.99 lb)
Installation	Surface Mount
Certifications	CE; FCC
Installation Angle	Straight

## Installation



## Dimensions (mm[inch])

