

DHI-ARM320-W2(868)

Dahua Wireless Input Expander



- Six types of alarms: Intrusion, medical, fire, emergency, gas, and tamper.
- Connects to external power supplies.
- Triggers alarms when the device is moved.
- Alarms go off when the device overheats.
- Cloud update.
- The two-way wireless encrypted communication mechanism improves the security and stability of communication.
- With the wireless frequency hopping mechanism, the device automatically hops to other available frequency bands when the original frequency band is being interfered with by other wireless radios, to ensure communication remains smooth.

System Overview

The Wireless Input Expander is a conversion device that connects third-party detectors to Dahua Wireless Hub. When the alarm of the third-party detector is triggered, the Expander sends the signal to the Hub through RF, and then the Hub reports it to platforms. Different alarm types can be configured on the DMSS app, depending on the types of connected detectors. The expander has a triaxial accelerometer in it to prevent the device from movement. An input channel is also provided to connect the tamper port of the third-party detectors. The Expander is powered by dry batteries, and can also provide power supply for detectors connected to it.

Technical Specification

Port	
Alarm Input	2 (1 for alarm and 1 for anti-tampering)
Auxiliary Power Output	3.3 V, up to 10 mA
Function	
Button	1 × power button
Remote Update	Cloud update
Low Battery Detection	Yes
Tamper	Yes
Measuring Range (Temperature)	-10 °C to +55 °C (+14 °F to +131 °F) (indoor)
Technical	
Sensor	Triaxial accelerometer
LED Indicator	1 × green alarm indicator
Scenario	Indoor
Operating Current	45 uA (with 1 min heartbeat, normally open mode, charge not being provided for other devices and device moved alarm not enabled)
Alarm Current	50 mA

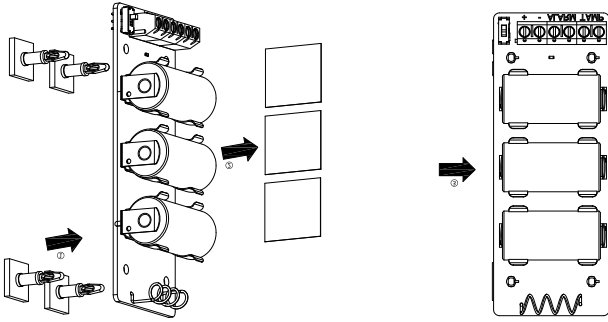
Wireless

Carrier Frequency	868.0 MHz–868.6 MHz
Transmitter Power (EIRP)	Limit 25 mW
Communication Mechanism	Two-way
Communication Distance	Up to 1600 m (5249.34 ft) in an open space
Encryption Mode	AES128
Frequency Hopping	Yes

General

Power Supply	3 × CR123A battery
Battery Model	CR123A
Battery Life	5 years (4 years if the external input type is pulse)
Power Consumption	Max. 150 mW (without providing charge for other devices)
Operating Temperature	-10 °C to +55 °C (+14 °F to +131 °F) (indoor)
Operating Humidity	10%–90% (RH)
Product Dimensions	102 mm × 39 mm × 21.5 mm (4.02" × 1.54" × 0.85")
Net Weight	77 g (0.17 lb)
Gross Weight	135 g (0.30 lb)
Installation	Surface mount, or mount inside a third-party device
Certifications	CE EN 50131-1:2006+A1:2009+A2:2017+A3:2020 EN 50131-3:2009 EN 50131-6:2017+A1:2021 EN 50131-5-3:2017 Security Grade 2 Environmental Class II
Anti-corrosion Level	Basic Protection
Packaging Dimensions	95 mm × 43 mm × 139 mm (3.74" × 1.69" × 5.47")

Installation



Dimensions (mm/inch)

