

G4 Pro

4G Multi-Biometric Access Control Terminal With a Multi-tech Card Module

Compatible with

 **ZKBio CVSecurity**

Compatible with

 **ZKBio Time**



G4 Pro is equipped with a fully upgraded version of the Android 9.0 system, adding new features such as PoE power supply, and it is compatible with 4G network, satisfying various market needs including Europe, the Middle East, Africa, South Korea, Thailand, and India

Resembles G4, **G4 Pro** is equipped with ZKTeco's enhanced Visible Light Facial Recognition technology. Also, G4 Pro has installed a new mini QR code reader to scan T&A/A&C dynamic QR codes on the ZKBio CVSecurity mobile application. The reader supports QR code, PDF417, Data Matrix, MicroPDF417, Aztec scanning in third-party development projects.

ZKTeco also provides an LCDP tool which is used for 3rd party applications integration. It includes simplified bottom hardware interface, algorithm interface and some upper business logic and configuration, which can make development easier and more efficient.

Features

- Compatible with 4G network optional, supported E.U. , UAE, Africa, South Korea, Thailand, India, etc.
- Scanning of T&A/A&C dynamic QR codes on the ZKBio CVSecurity Mobile App
- Open Supervised Device Protocol (OSDP v2.1.7)
- Dual-frequency (125kHz and 13.56MHz) card module (standard)
- Support Multi-tech card module (optional)
- Android Android LCDP for the 3rd-party application integration
- IEEE 802.3af/at PoE (Power over Ethernet) power supply
- Mask detection
- Anti-spooning algorithm against print attack (laser, color, and B/W photos) and video attack

Specifications (G: GL Exclusive Feature)

Capacity

- 50,000 Users
- G** 50,000 Faces
- 50,000 Cards
- G** 1,000,000 Transactions

CPU

64bit Octa-core Customized Computer Vision 1.8GHz CPU

Storage

2GB LPDDR3
16GB eMMC

Screen

7-inch Touch Screen
720*1280 Pixels

Camera

2MP Binocular Camera

Communication

- TCP/IP, USB Host, RS485*, Wiegand Input, Wiegand Output, Wi-Fi, Bluetooth, 4G(optional)
- WLAN: 2.4G, 802.11 b/g/n
- Bluetooth: BT2.1+EDR/3.0/4.1 LE/4.2 BLE
- G** LTE FDD: B1/B2/B3/B4/B5/B7/B8/B20/B28
- G** LTE TDD: B38/B39/B40/B41
- G** WCDMA: B1/B2/B4/B5/B8
- G** GSM: 1800/1900MHz

Access Control Interface

RS485 (OSDP v2.1.7), Wiegand In/Out, Lock Relay Output, Exit Button, Alarm Output, Auxiliary Input, Door Sensor, External Bell

Card

125kHz ID card & 13.56MHz IC card
Multi-tech Card Module (optional)

QR Code Scanner

Dynamic QR codes on the ZKBio CVSecurity mobile application
QR code, PDF417, Data Matrix, MicroPDF417, Aztec scanning in third-party development projects

Fingerprint(optional)

- G** Z-ID Fingerprint Sensor
- G** 30,000 Fingerprints

Algorithms

ZKFace 5.6.2
ZKFinger 10.0

Operating Temperature

-20°C to 55°C (-4°F to 131°F)

Operating Humidity

<90%RH

Storage Temperature

-25°C to 65°C (-13°F to 149°F)

Storage Humidity

<90%

Dimensions (H*L*D)

264mm*120mm*51mm (9.69in*4.72in*2in)

Facial Recognition Speed

≤ 0.5s

Facial Recognition Distance

0.5m to 3m

Power supply

- DC 12V, 3A
- G** IEEE 802.3af / at

Standard Firmware Functions

Push, Schedule Bell, Automatic Status Switch, Record Query, Access Levels, Groups, Holidays, DST, Duress Mode (Password & Fingerprint), Anti-Passback, Customization of Wallpaper & Screen Saver

Software

ZKBio Time (Only Time & Attendance Firmware)
ZKBio CVSecurity

SDK

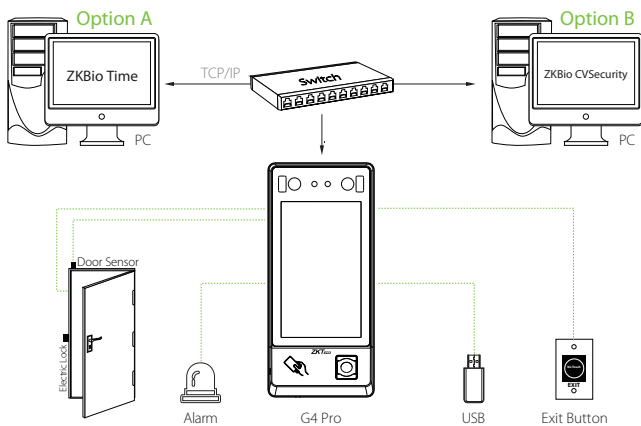
Android LCDP
PUSH SDK

Certifications

CE, FCC, ISO9001, ISO14001, ISO20000

* Note: RS485 is for RS485 readers.

Configuration



Dimensions (mm)

