



# SenseFace 2A Access Control Device Kit



## SenseFace 2A Access Control Device

### Features

- Multiple Authentication Methods: Facial / Fingerprint / RFID / Password
- Available RFID Modules: 125 kHz ID Card (Standard) / 13.56 MHz IC Card
- Compatible with wireless doorbell (optional)
- HD Video Door Phone Via SIP Protocol (Version 2.0). Compatible With ZKTeco SIP Video Intercom Indoor Monitor (VT07-B01 and VT07-B01-W)
- User Data Synchronization: User data can be downloaded/uploaded from one device to another via a USB drive.

### Specifications

Display	2.4" @ TFT Color LCD Screen (320*240)
Camera	WDR Binocular Camera @ 1MP
Operation System	Linux
Authentication Method	Fingerprint / Face / Card / Password (Physical Keypad)
Fingerprint Template Capacity	3,000 (1:N) (Standard)
Face Template Capacity	1,500 (1:N) (Standard)
Card Capacity	3,000 (1:N) (Standard)
User Capacity	3,000 (1:N) (Standard)
Transaction Capacity	150,000 (1:N)
Communication	TCP/IP*1, Wi-Fi, USB*1, Electric Lock*1, Door Sensor*1, Exit Button*1
Optional Functions	IC Card, Wi-Fi, Wireless Doorbell
Operating Temperature	-5°C to 45°C
Operating Humidity	20% to 80% RH (Non-condensing)
Dimensions	205.20 mm*74.19 mm*33.30 mm (L*W*H)
Power Supply	DC 12V 1.5A



## TLEB102 Exit Button

### Features

- NO/NC/COM; Touchless Sensor

### Specifications

Switching Voltage	DC 9 to 16V
Rated Current	2A
Operating Temperature	-20°C to 50°C
Storage Temperature	-20°C to 65°C
Working Humidity	10% to 90%
Shell Material	SUS304 stainless steel material
Infrared Sensing Distance	2cm to 10cm
Dimensions (L*W*H)	115*70*38 (mm)



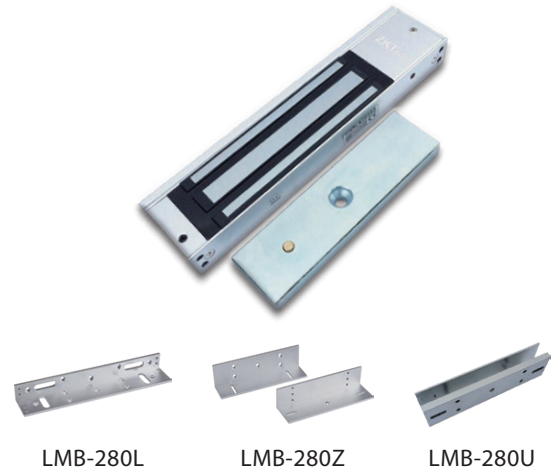
# LM-2805 Electromagnetic Lock

## Features

- Withstands 200kg to 220kg of closing force
- U, L, Z mounting brackets are available
- Suitable for metal, wooden, and glass doors
- Offers signal feedbacks

## Specifications

Input Voltage	DC 12V
Working Current	450mA (±5%)
Tensile Strength	200kg (±5%)
Weight	1.77kg
Dimensions of the Lock Body (W*H*D)	250*47*25.5 (mm)
Dimensions of the Iron Plate (W*H*D)	180*38*11 (mm)
Interface Description	V+ represents positive electrode; V- represents negative electrode; Feedback signal output: NO/COM/NC



# VT07-B01 Smart IP Video Indoor Monitor (Optional)

## Features

- Integrates video intercom with access control terminal
- Support IPC access, support ONVIF protocol
- Support standard SIP protocol 2.0
- 7" LCD touch screen
- Support micro TF card, maximum support 128GB capacity

## Specifications

Name	VT07-B01
OS	Linux System
DDR	2G
Flash	1G
Display	7" LCD touch screen
Resolution	1024*768
Video Display	Support 4 channel video display/ full screen
Wired Network	Support RJ45 network port
Wireless Network	IEEE 802.11b/ g/ n (optional)
TF Card Slot	Support up to 128GB micro TF card
Network Interface	RJ45 Network Port
Power	DC12V 2A
Operating Temperature	-10°C to 55°C
Dimension	185*117*22 mm
Weight	410g



SAP Code: 200032555

# WDB04 Wireless Doorbell (Optional)

## Features

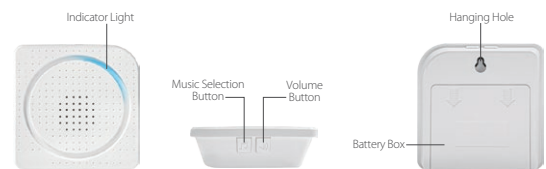
- Humanized design, simple and convenient installation
  - Long distance reception up to 8m
  - Low power consumption and long battery life, standby power saving
- \*Note: Please refer to the SenseFace 2A User Manual for specific pairing and unbinding methods

## Specifications

Power Supply Method	DC 4.5V 3 × AA battery power supply
Working Frequency	433.92MHz
Power Consumption	≤ 0.5w
Working environment Temperature	-10°C to 60°C
Ringtones	38/36 Chord music
Volume	4 Levels adjustable volume
Dimension	86*86*29mm



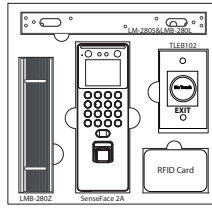
SAP Code: 100031268



# Package List

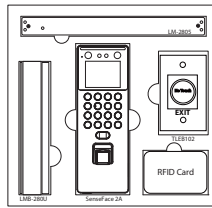
## SenseFace 2A Kit A (SAP Code: 300030581)

Item	Description	Quantity
SenseFace 2A	Access control terminal	1
LM-2805	-Surface mounted 280KG single door magnetic lock -Withstands 200kg to 220kg of closing force -Suitable for metal, wooden, and glass doors -Offers signal feedbacks	1
TLEB102	Infrared Contactless Exit Button	1
RFID Card	125kHz EM card	10
Lock Bracket	LMB-280L * 1 + LMB-280Z * 1	1



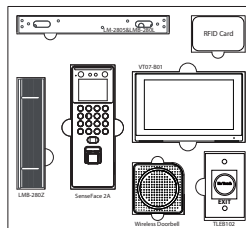
## SenseFace 2A Kit B (SAP Code: 300030582)

Item	Description	Quantity
SenseFace 2A	Access control terminal	1
LM-2805	-Surface mounted 280KG single door magnetic lock -Withstands 200kg to 220kg of closing force -Suitable for metal, wooden, and glass doors -Offers signal feedbacks	1
TLEB102	Infrared Contactless Exit Button	1
RFID Card	125kHz EM card	10
Lock Bracket	LMB-280U * 1	1



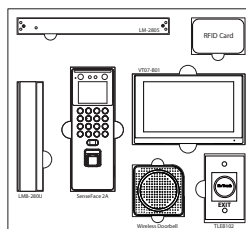
## SenseFace 2A Kit C (SAP Code: 300030583)

Item	Description	Quantity
SenseFace 2A	Access control terminal	1
LM-2805	-Surface mounted 280KG single door magnetic lock -Withstands 200kg to 220kg of closing force -Suitable for metal, wooden, and glass doors -Offers signal feedbacks	1
TLEB102	Infrared Contactless Exit Button	1
RFID Card	125kHz EM card	10
Lock Bracket	LMB-280L * 1 + LMB-280Z * 1	1
VT07-B01	Smart IP Video Indoor Monitor	1
WDB04	433MHz Wireless Doorbell	1



## SenseFace 2A Kit D (SAP Code: 300030584)

Item	Description	Quantity
SenseFace 2A	Access control terminal	1
LM-2805	-Surface mounted 280KG single door magnetic lock -Withstands 200kg to 220kg of closing force -Suitable for metal, wooden, and glass doors -Offers signal feedbacks	1
TLEB102	Infrared Contactless Exit Button	1
RFID Card	125kHz EM card	10
Lock Bracket	LMB-280U * 1	1
VT07-B01	Smart IP Video Indoor Monitor	1
WDB04	433MHz Wireless Doorbell	1



# Scenarios



Face Authentication



Password Authentication



Fingerprint Authentication



Card Authentication

